



calista

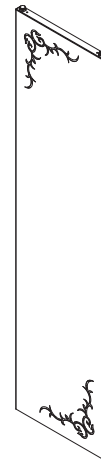
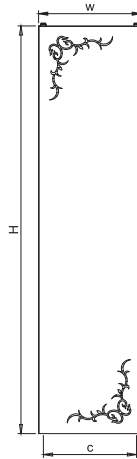
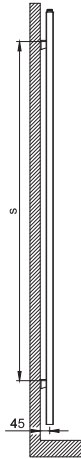
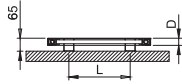


ROMANTIC CURVES

Those who want to meld the innovativeness of stainless steel with soft and romantic decoration will love Calista.

A delicate creation!





calista

material	finish	electric version	wall installation	warranty
stainless steel steel	satın polished	900 W 1200 W	vertical	5 years

max. working pressure: 10 bar
max. working temperature: 95°C
all dimensions are in mm.
connections 1/2"

Product Code	Width	Height	Depth	Connection Centers	Tube Quantity	Assembly Axis		Weight	Water Capacity	THERMAL POWER		
	W	H	D	C		S	L	kg.	lt.	btu	k/cal	watt
CAL040018000009	400	1800	35	360	-	1470	200	28,4	8,2	2879	725	843
CAL040020000009	400	2000	35	360	-	1645	200	31,2	9,2	3227	813	945
CAL050018000009	500	1800	35	460	-	1470	300	33,1	9,8	3508	884	1028
CAL050020000009	500	2000	35	460	-	1645	300	36,4	10,9	3934	991	1153
CAL060018000009	600	1800	35	560	-	1470	400	37,9	11,3	4136	1042	1212
CAL060020000009	600	2000	35	560	-	1645	400	41,7	12,7	4641	1169	1360

Vermogen (Watt) berekend op 75/65/20 graden Delta T50
Bij 90/70/20 graden vermenigvuldig het vermogen met 1.26

CALISTA

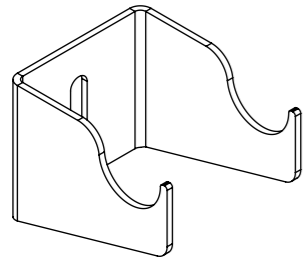
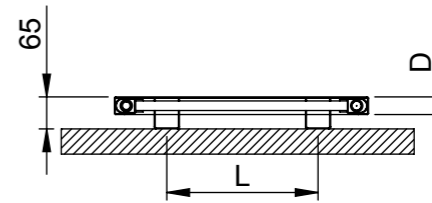
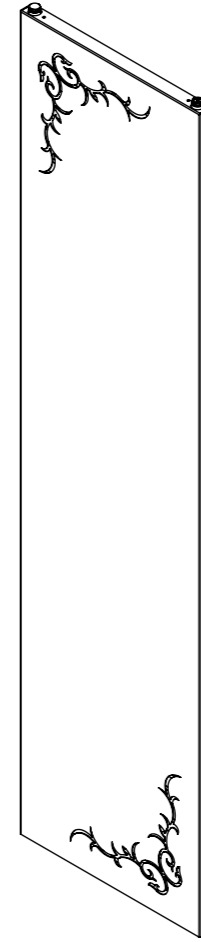
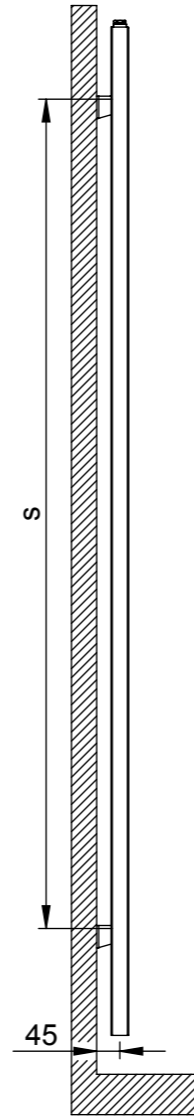
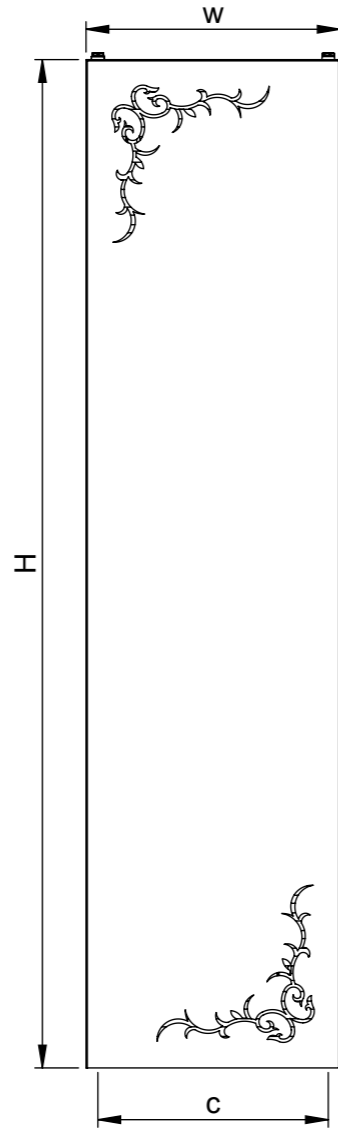
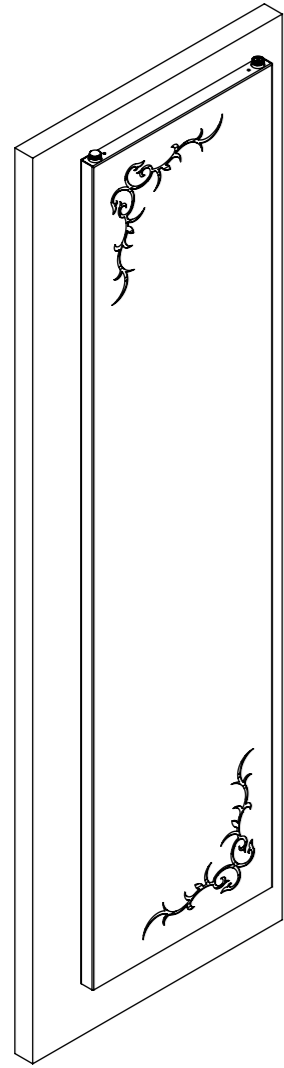


carisa
design radiator

The contents of this document are property of **Termosan**® and should not be copied, reproduced or disclosed to a third party without written consent of the proprietor.

www.carisa.com.tr

www.termosan.com
info@termosan.com



x4 Pcs.

Product Code	Width	Height	Depth	Connection Centers	Tube Quantity	Assembly Axis		Weight	Water Capacity
	W	H	D	C		S	L		
CAL040018000009	400	1800	35	360	-	1470	200	28	8
CAL040020000009	400	2000	35	360	-	1645	200	31	9
CAL050018000009	500	1800	35	460	-	1470	300	33	10
CAL050020000009	500	2000	35	460	-	1645	300	36	11
CAL060018000009	600	1800	35	560	-	1470	400	38	11
CAL060020000009	600	2000	35	560	-	1645	400	42	13