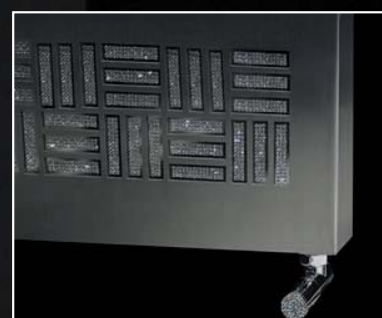
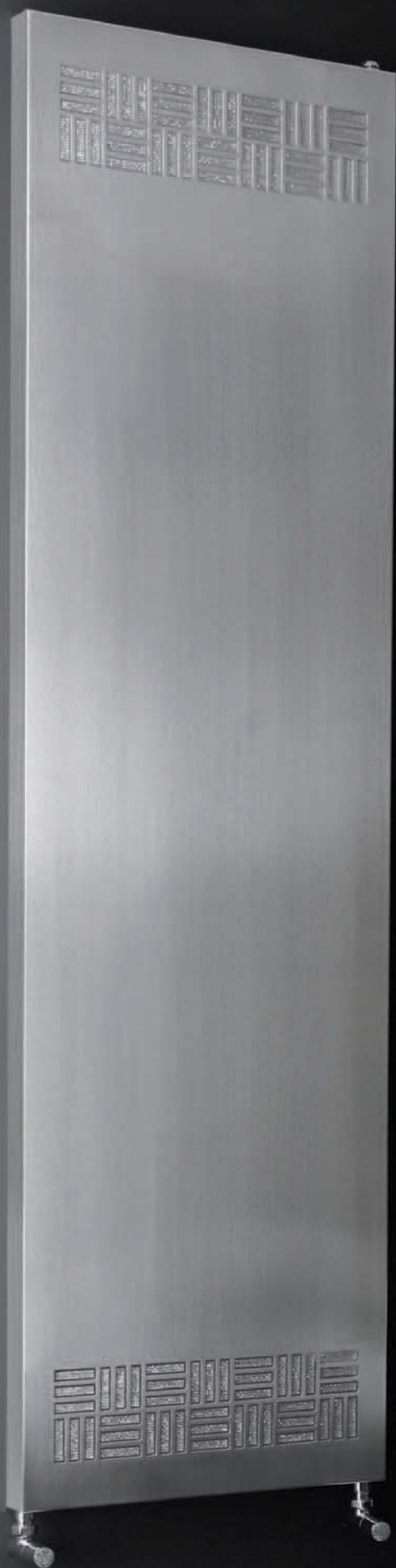


# charme



**JEWELS OF WARMTH**  
The absolute limit of imagination.  
Highly efficient steel radiator  
covered with Swarovski stoned  
panels. A swanky radiator targeting  
those who love diamonds.



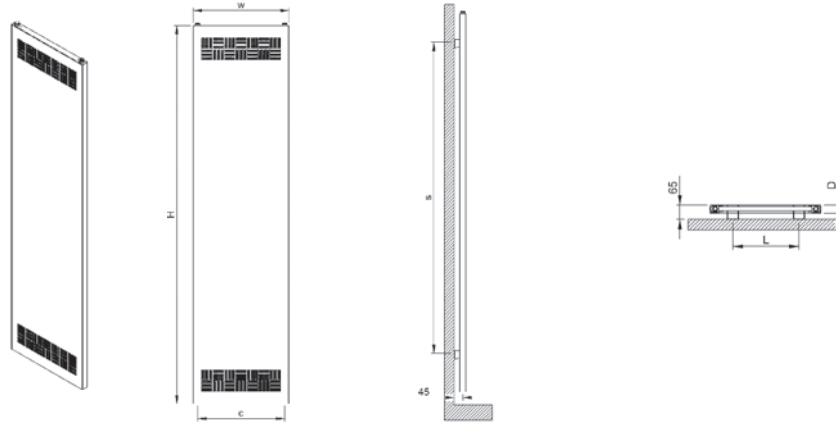
Made with CRYSTALLIZED™ Swarovski Elements



technical specs page 126



**charme**



material	finish	electric version	wall installation	warranty
stainless steel steel	satin polished swarovski crystals	1200 W	vertical	5 years

max. working pressure: 10 bar  
 max. working temperature: 95°C  
 all dimensions are in mm.  
 connections 1/2"

Product Code	Width	Height	Depth	Connection Centers	Tube Quantity	Assembly Axis		Weight	Water Capacity	THERMAL POWER		
	W	H	D	C		S	L	kg.	lt.	btu	k/cal	watt
CHA050018000009	500	1800	35	460	-	1470	200	35,1	9,8	3508	884	1028

Made with CRYSTALLIZED™ Swarovski Elements

Vermogen (Watt) berekend op 75/65/20 graden Delta T50  
 Bij 90/70/20 graden vermenigvuldig het vermogen met 1.26

# CHARME

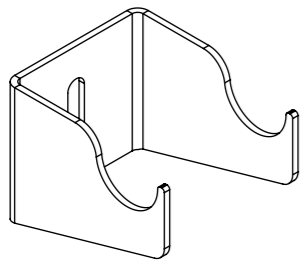
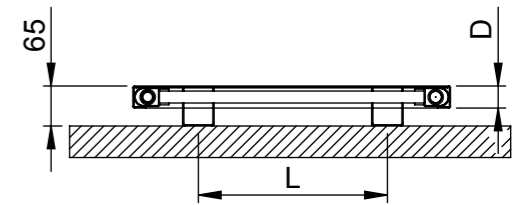
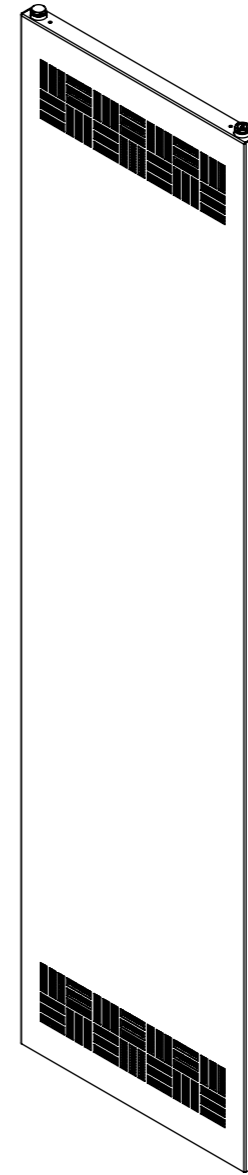
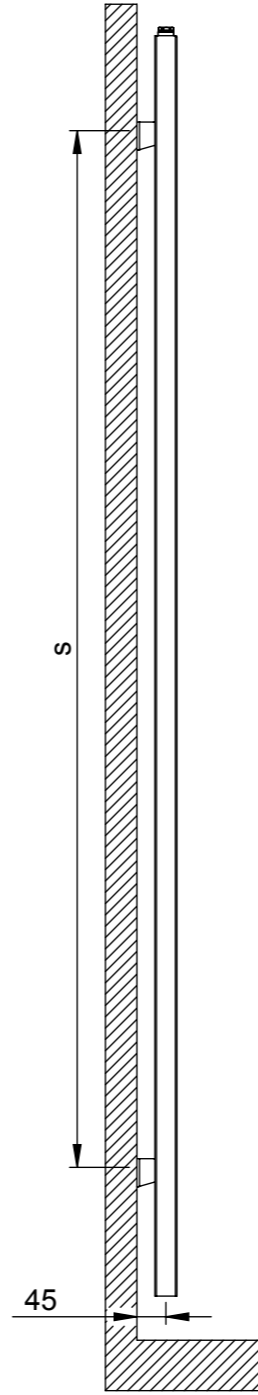
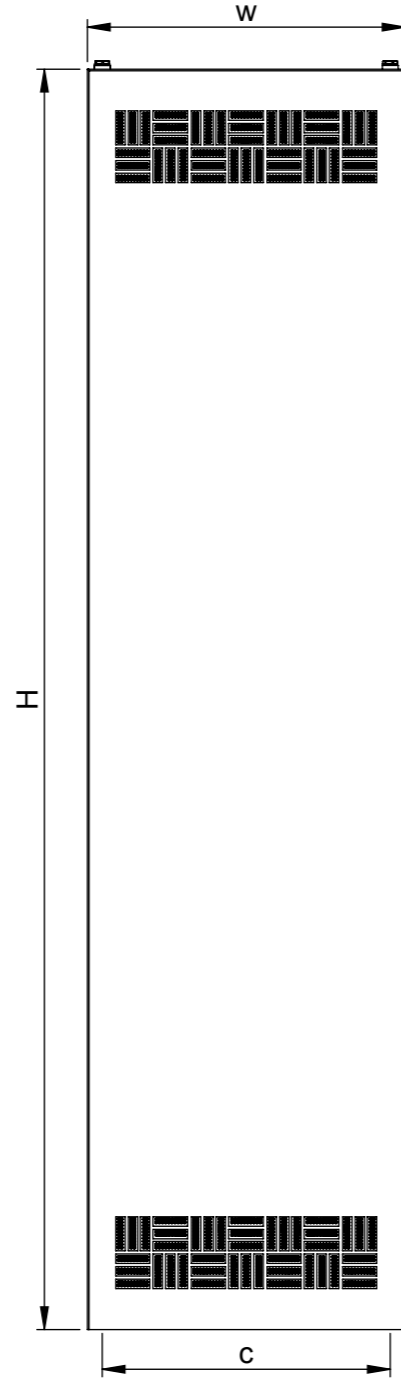
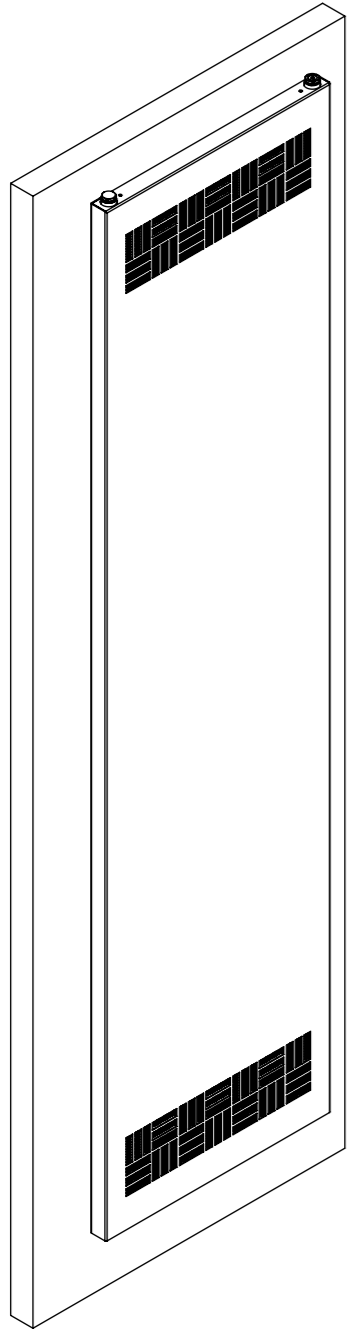


**carisa**<sup>®</sup>  
design radiator

The contents of this document are property of **Termosan**<sup>®</sup> and should not be copied, reproduced or disclosed to a third party without written consent of the proprietor.

[www.carisa.com.tr](http://www.carisa.com.tr)

[www.termosan.com](http://www.termosan.com)  
[info@termosan.com](mailto:info@termosan.com)



x4 Pcs.

Product Code	Width	Height	Depth	Connection Centers	Tube Quantity	Assembly Axis		Weight	Water Capacity
	W	H	D	C	-	S	L	kg.	lt.
CHA050018000009	500	1800	35	460	-	1470	200	35	10