

eurus

67



OBJECT OF DESIRE

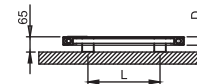
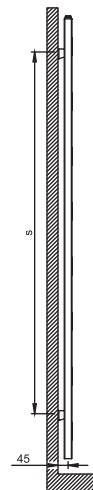
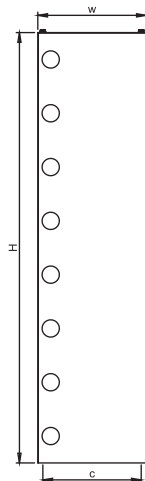
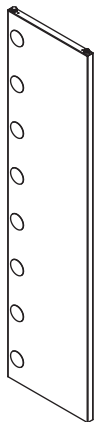
A radiator of refinement to please elegant tastes. Eurus conveys a soft breeze through your space. This steel radiator will provide maximum efficiency.



technical specs page 126



eurus



material	finish	electric version	wall installation	warranty
stainless steel steel	satin polished	900 W 1200 W	vertical	5 years

max. working pressure: 10 bar
 max. working temperature: 95°C
 all dimensions are in mm.
 connections 1/2"

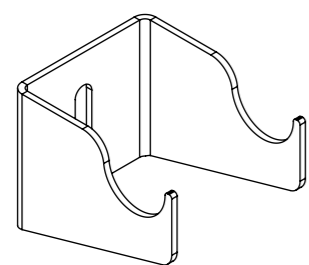
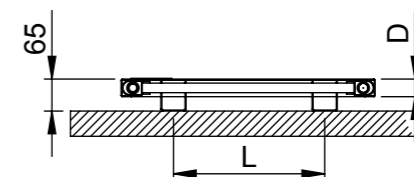
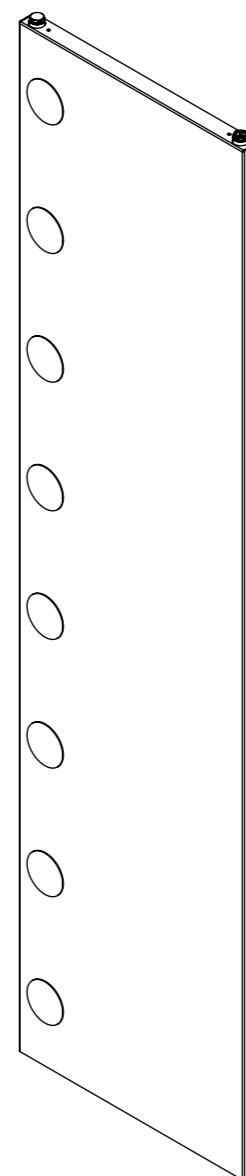
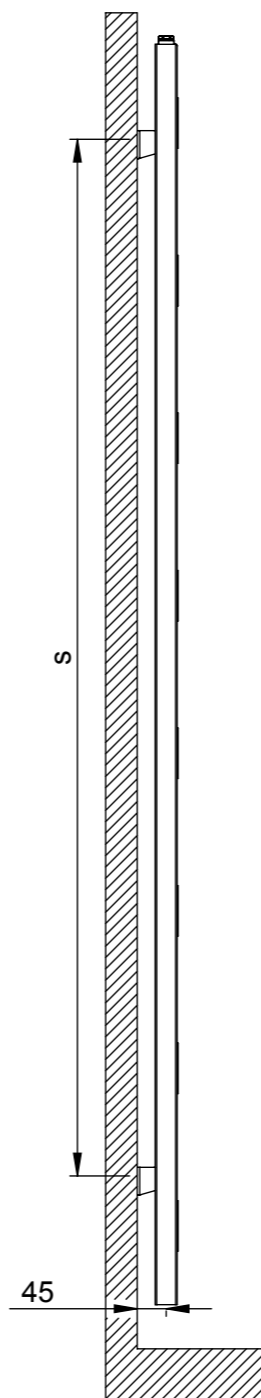
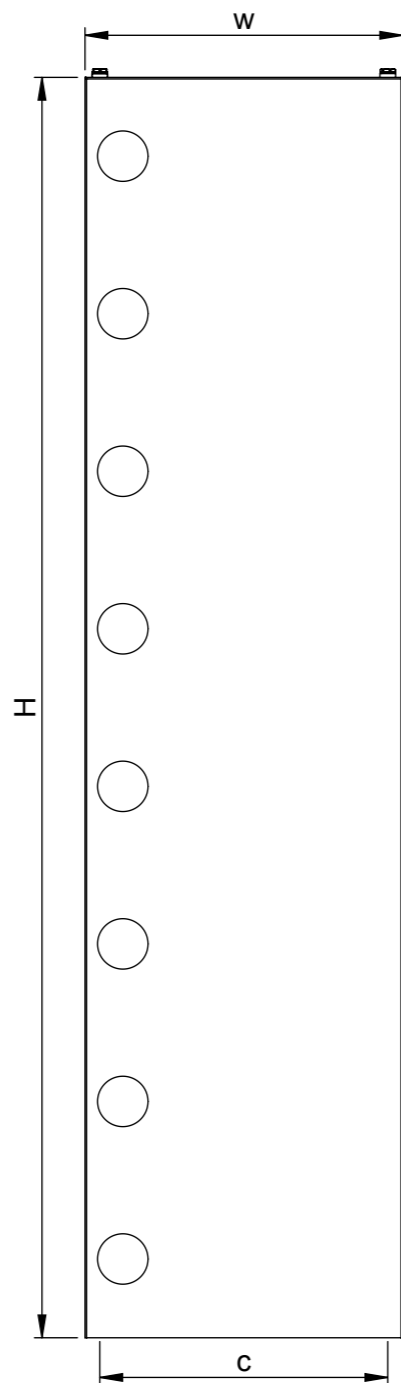
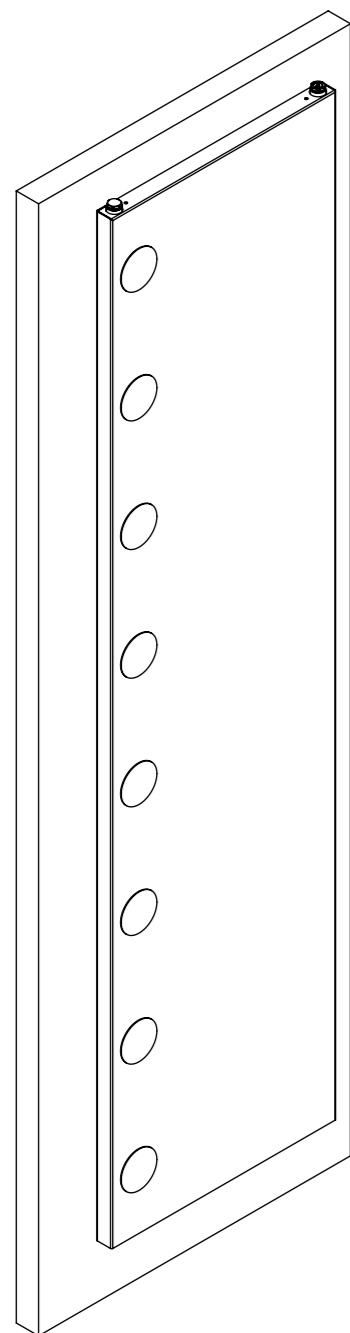
Product Code	Width	Height	Depth	Connection Centers	Tube Quantity	Assembly Axis		Weight	Water Capacity	THERMAL POWER		
	W	H	D	C		S	L	kg.	lt.	btu	k/cal	watt
EUR040018000009	400	1800	35	360	-	1470	200	26,4	8,2	2879	725	843
EUR040020000009	400	2000	35	360	-	1645	200	29,2	9,2	3227	813	945
EUR050018000009	500	1800	35	460	-	1470	300	31,1	9,8	3508	884	1028
EUR050020000009	500	2000	35	460	-	1645	300	34,4	10,9	3934	991	1153
EUR060018000009	600	1800	35	560	-	1470	400	35,9	11,3	4136	1042	1212
EUR060020000009	600	2000	35	560	-	1645	400	39,7	12,7	4641	1169	1360

Vermogen (Watt) berekend op 75/65/20 graden Delta T50
 Bij 90/70/20 graden vermenigvuldig het vermogen met 1.26

EURUS

The contents of this document are property of Termosan® and should not be copied, reproduced or disclosed to a third party without written consent of the proprietor.

www.carisa.com.tr



x4 Pcs.

Product Code	Width	Height	Depth	Connection Centers	Tube Quantity	Assembly Axis		Weight	Water Capacity
	W	H	D	C		S	L	kg.	lt.
EUR040018000009	400	1800	35	360	-	1470	200	26	8
EUR040020000009	400	2000	35	360	-	1645	200	29	9
EUR050018000009	500	1800	35	460	-	1470	200	31	10
EUR050020000009	500	2000	35	460	-	1645	200	34	11
EUR060018000009	600	1800	35	560	-	1470	200	36	11
EUR060020000009	600	2000	35	560	-	1645	200	40	13

www.termosan.com
info@termosan.com